

robotMe

What if a robot worked for you?

“ Currently demonstrated technologies could automate 45% of the activities people are paid to perform.

McKinsey

“ More than 40% of jobs are likely to be automated by 2030.

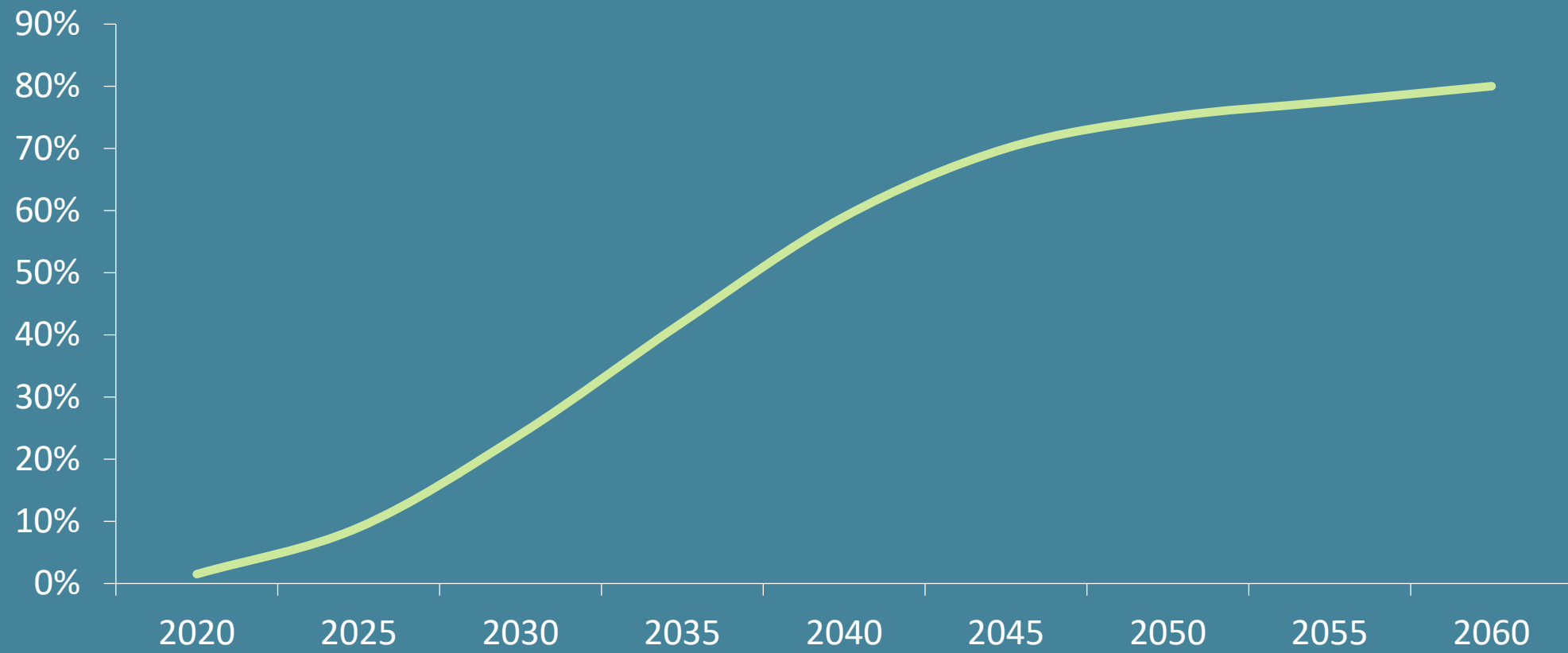
Oxford University

“ Nearly half of current jobs could be automated by 2055.

World Economic Forum

Progression of AI* automation

* Artificial Intelligence



People are faced with...

Suddenness without precedent

The displacement, disappearance and disruption of **jobs**

loss of value of their **skills**

lack of control over their **personal data**

the need for permanent re-**training**

financial **uncertainty**

Companies are faced with...

automated competitors

the need to valorise their expertise and data

lack of knowledge of Artificial Intelligence integration

the necessary reorientation of their employees

Opportunities

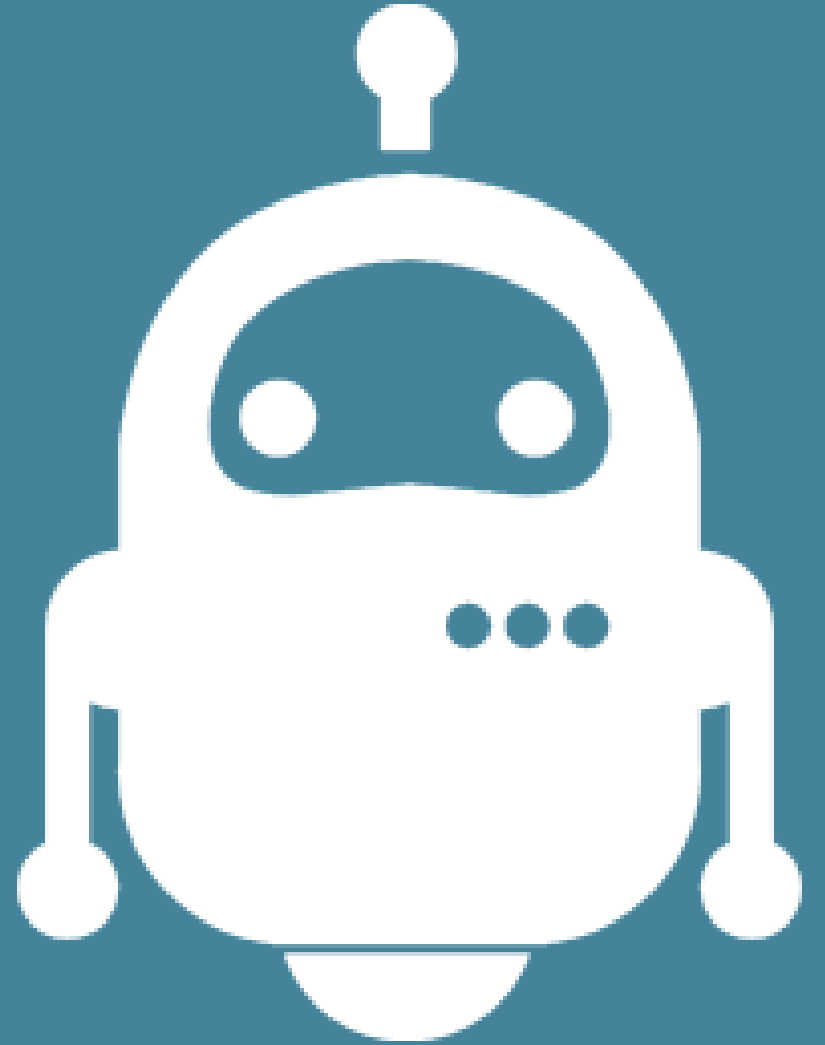
AI and blockchain technologies

Work automation disruption

Fear of personal data misuse

Global sustainability awareness

robotMe provides a future to companies and individuals by enabling them to train artificial intelligence for their work while they work.



Our estimates of automatable jobs

People doing repetitive work on PCs

700'000 in **Switzerland**, or 18% of jobs

4'500'000 in **France**, or 15% of jobs

4'500'000 in **Germany**, or 15% of jobs

3'500'000 in the **United Kingdom**, or 15% of jobs

13'000'000 in the **United States**, or 12% of jobs

46'000'000 in **China**, or 8% of jobs

In payroll costs that's (in CHF)

Gross salary not including employer taxes

51 billion in Switzerland

160 billion in France

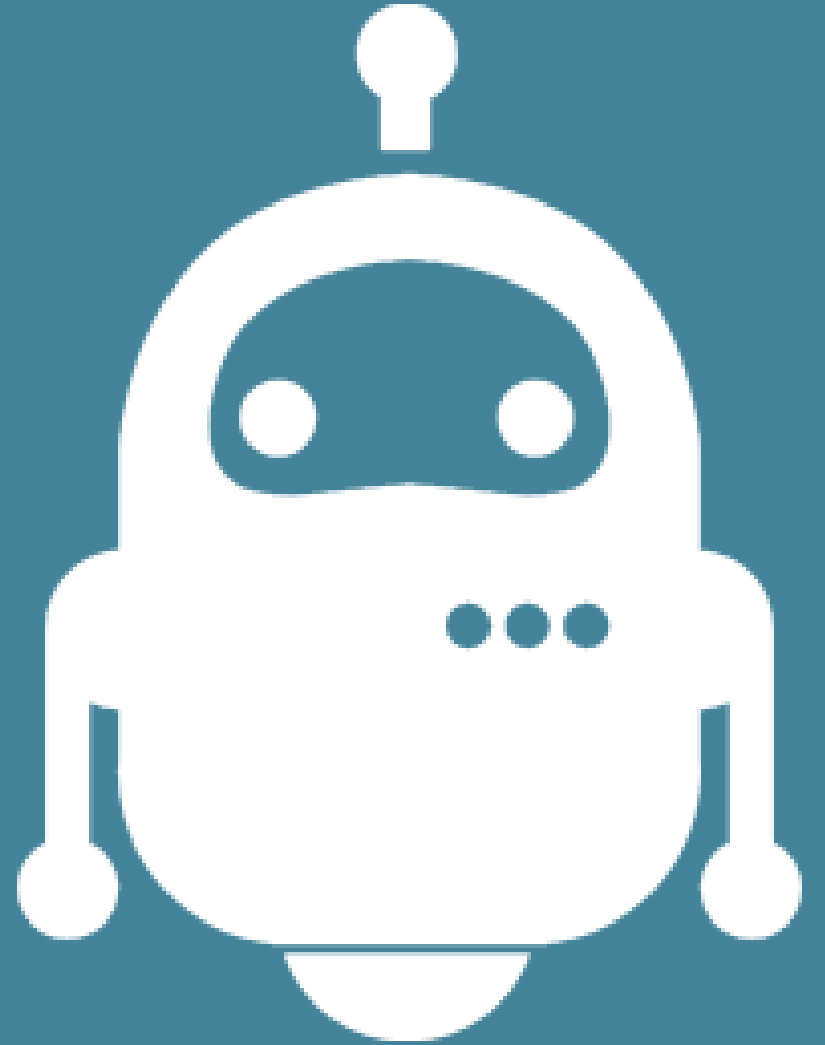
168 billion in Germany

128 billion in the United Kingdom

468 billion in the United States

278 billion in China

robotMe aims to automate 80% of
the work done on personal
computers today by 2060.



How robotMe works

- 1 learn
- 2 help
- 3 delegate
- 4 automate & remunerate

1 learn

analyse & advise

robotMe observes the use of computer and mobile devices.

robotMe categorizes tasks and asks questions about the work.

robotMe provides detailed analysis and advice.



2 help and practice

When robotMe detects a task it has learned, it displays an output proposal.

If you accept the proposal, robotMe completes the task using your software.

By letting robotMe help you, you're training it to do these tasks on its own.



3

delegate to a human

When robotMe identifies a task that another person can do for you, it suggests that you delegate it.

If you accept, robotMe sends the task, checks the result and informs you of its progress and completion.



3

delegate to you

robotMe knows your qualifications. It automatically finds the tasks that you are best able to do.

If you accept a proposal, robotMe sends you the task, checks your work and pays for it.



4

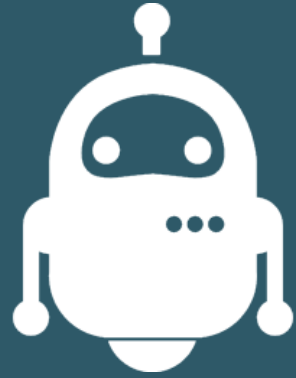
automate

delegates to AI

When robotMe identifies a task that artificial intelligence can handle, it offers to process it.

If you accept, robotMe performs the task, checks the result and informs you of its completion.





robotMe

And if that robot paid you?



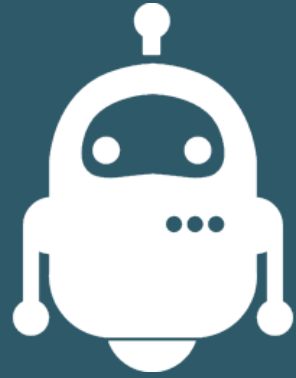
remunerate

sharing the profit of AI

When an automated task is handled by robotMe, the contributors who have trained it are paid.

Income is distributed equitably among individual, employer, AI creators and robotMe.





robotMe

Your favourite teammate works for you

Market

1st stage : freelancers and micro-companies

2nd stage : SME and/or large organizations as per research

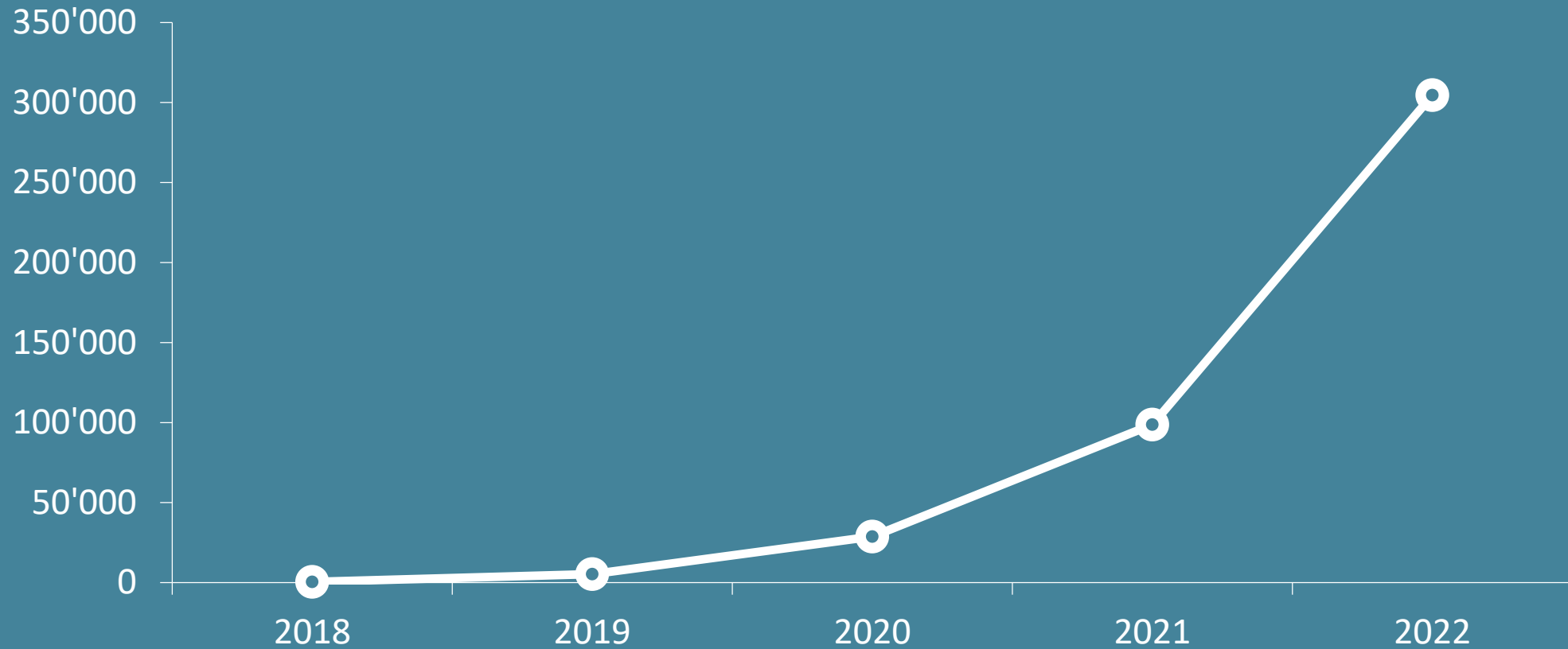
“ One in 4 employees is self-employed in Switzerland.

Deloitte

« Comment la technologie numérique et l'économie du partage sont en train de changer la population active suisse »

robotMe Users

aiming for 5 millions users in 2028



Marketing & Sales Strategy

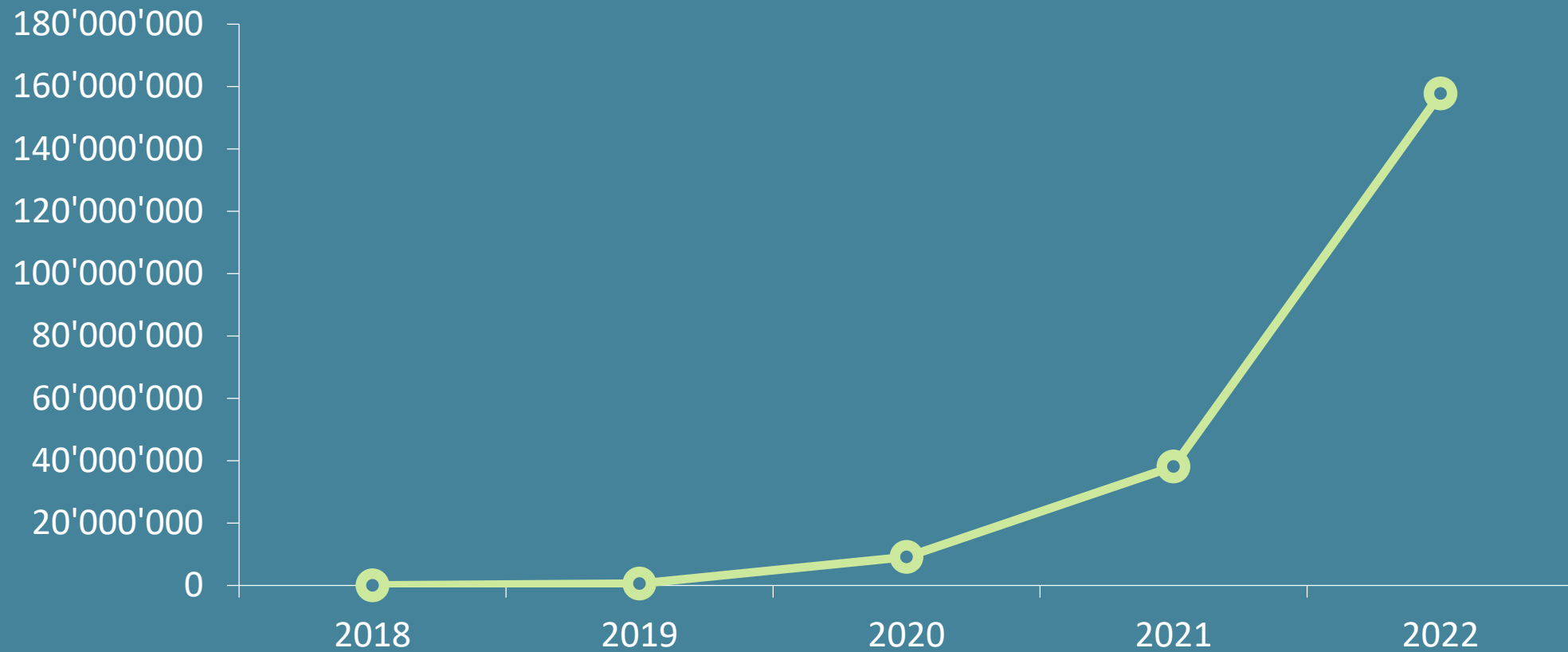
Free product / revolutionary features

Just cause - media coverage

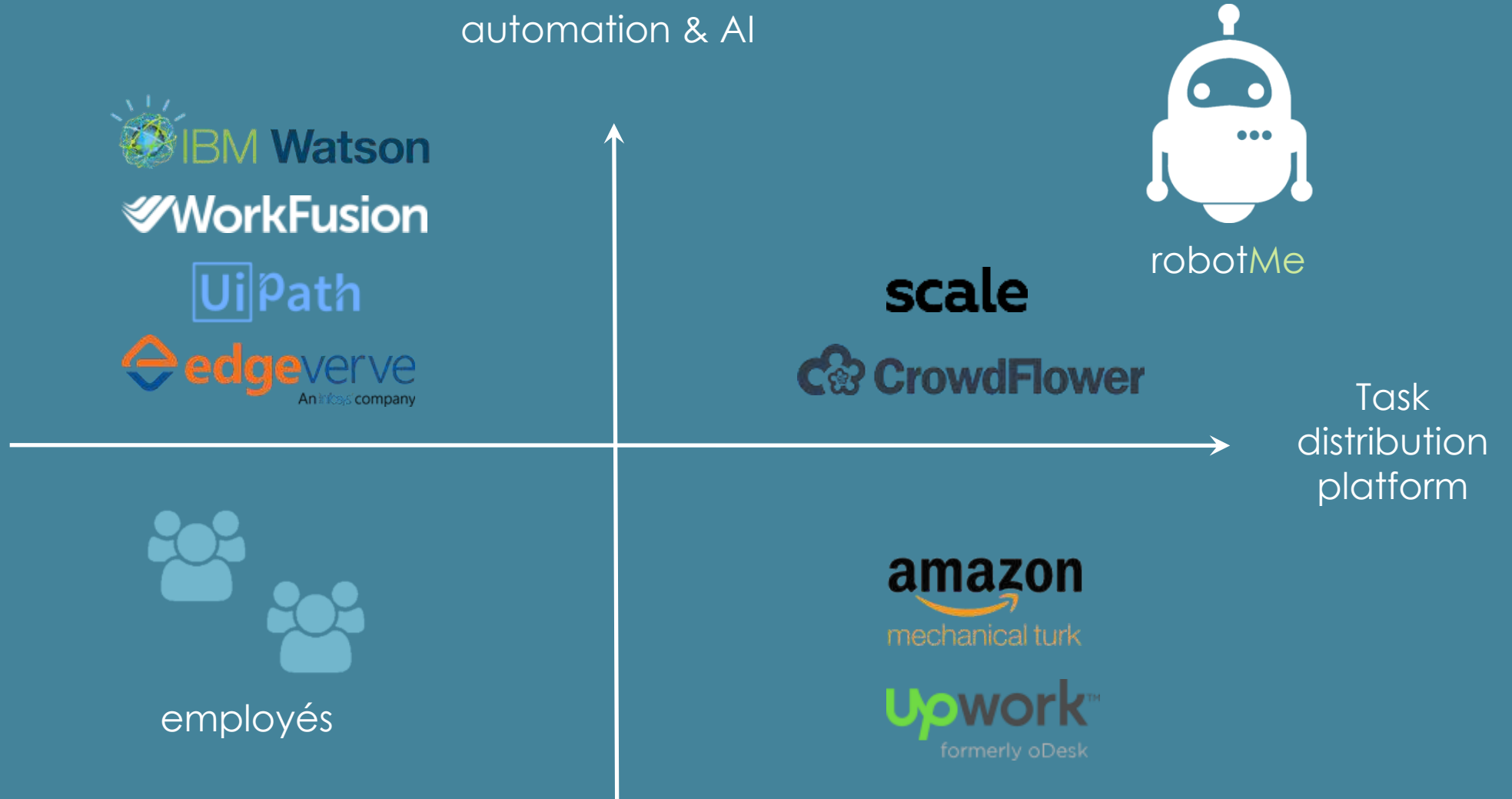
Sales force for companies at first

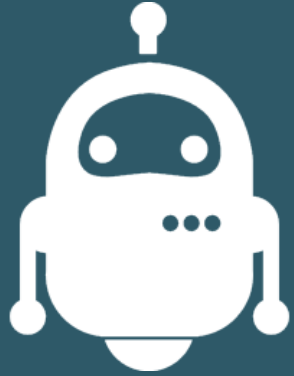
Automation revenue

Profitable from 2021



Competition





A few extra things you will want to know...



Artificial intelligence at the service of sustainable humanity

impactIA
foundation

Why a foundation ?

trust is essential

sensitive personal data

faith in our vision of a fair future

faith in the honesty of our solutions

faith in our motivations

impactIA intervenes in
the job **disruption**,
displacement and
loss generated by AI

“ Whereas the short-term impact of AI depends on **who controls it**, the long-term impact depends on whether it can be controlled at all

Stephen Hawking

BOARD OF TRUSTEES

The Board of Trustees combines expertise in AI technologies, adult education and professional transitions.



Laura Tocmacov

CEO, co-founder

Expert in professional transitions, social entrepreneur.

MIT, AI & business strategy

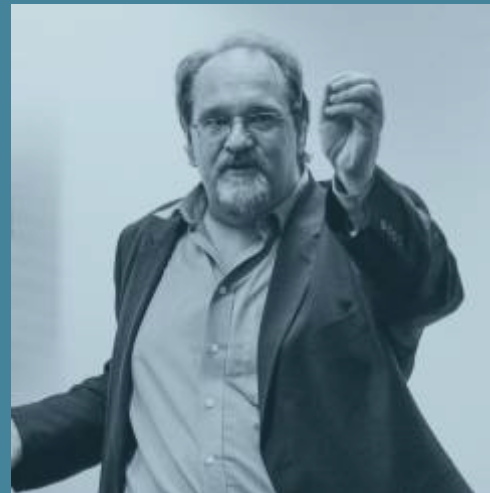


Timothy O'HEAR

President, co-founder

Head of Technology, Swissbilling. entrepreneur

EPFL



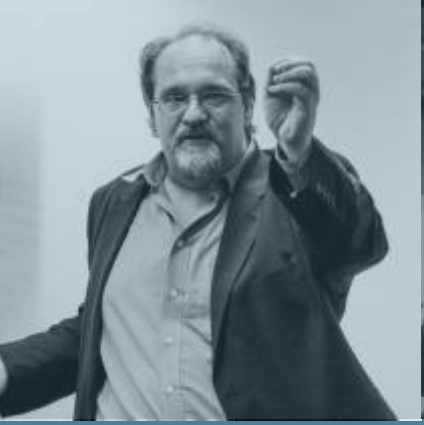
François Jung

Board Member

Sociologist and educator. entrepreneur

Lecturer, University of Geneva

ADVISORY BOARD



Multidisciplinary expertise to address AI challenges

An Open Platform

From idea to revenue generation

robotMe hosts third party AIs.

Collaboration with private companies,
schools and research institutes is essential.

(Data is never directly accessible by partners)





Artificial intelligence at the service of sustainable humanity

impactIA
foundation